



350 SANSOME STREET

FINANCIAL DISTRICT SUB-MARKET

Onsite lobby attendant
Full HVAC
Operable Windows
Onsite Parking
Amenity Rich Location
Steps to BART +
Embarcadero Center

PRIVATE OFFICES FOR LEASE

PLUG & PLAY SUBLEASE

JAY D. SHAFFER
(415) 407-3997
jshaffer@coltoncommercialsf.com
License #: 01444640



AVAILABLE NOW

350 SANSOME STREET

SPACE HIGHLIGHTS:



Shared Reception

SUITE 400

SIZE: 1-3 Private Offices

AVAILABILITY: Now

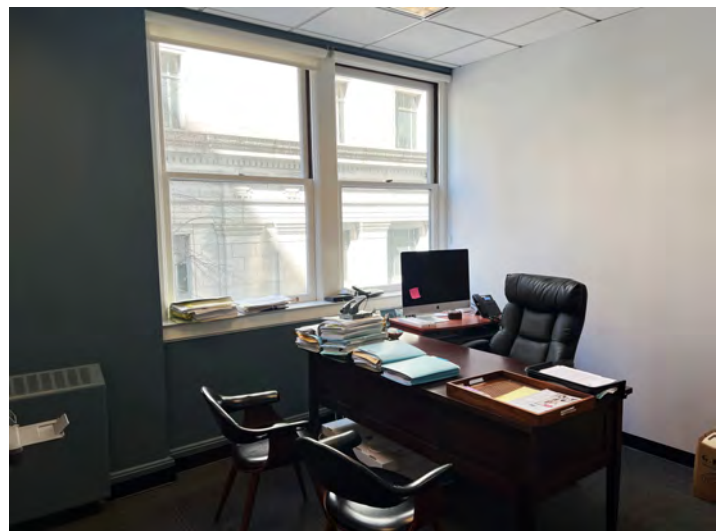
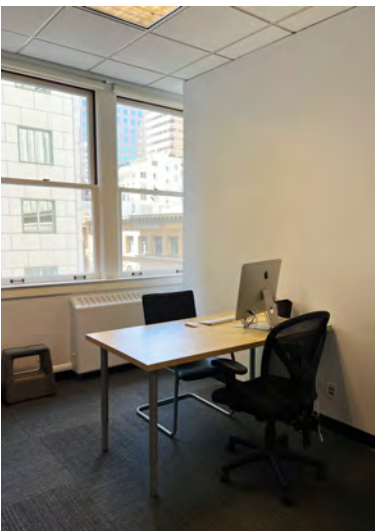
TERM: 1+ Year

RENTAL RATE: Negotiable, Fully Serviced

1 - 3 private offices for Sublease for a 1-year term (or potentially longer). Shared use of reception and kitchen. Master Tenant are various law firms. Newly improved space with great natural light, HVAC and operable windows. Onsite parking garage.



Shared Kitchen



350 SANSOME STREET

FLOOR PLAN

SUITE 400

1 - 3 private offices.
Shared use of reception and kitchen.
Newly improved space,
Great natural light,
HVAC and operable windows.
Onsite parking garage.

